



American Safari Cruises

Exclusive Yacht Adventures SM



"HAWAIIAN SEASCAPES"

8 Days/7 Nights — Maui to the Big Island (or reverse)

American Safari Cruises is the only company to offer unstructured inter-island yacht cruising among the Hawaiian islands, where the next "port" may not be a port at all. Instead, it may be a passage rich with wildlife, a secluded sandy beach or a quiet cove where you'll explore the surroundings on the shore or in the water. Truly a privileged experience—visit one of the richest marine mammal environments in all of North America and meet the people of Hawaii.

DAY 1 - Arrive in Maui

Welcome to Hawaii! You'll be transferred to the waiting Safari Explorer. After dinner, join us in the lounge for an introduction to your weeklong Hawaii adventure.

DAY 2 - Moloka'i - Halawa Valley

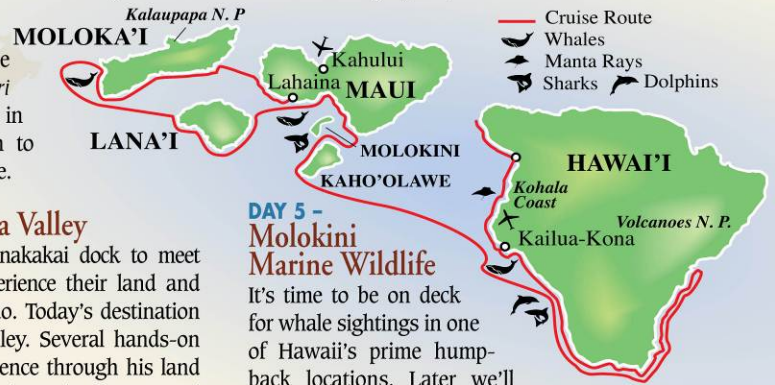
Breakfast brings us to the Kaunakakai dock to meet the people of Moloka'i and experience their land and traditions as few visitors ever do. Today's destination is the picture book Halawa Valley. Several hands-on activities await: hike with Lawrence through his land to a hideaway waterfall; learn about the history and archaeology of this ancient homeland on a guided walk; join Uncle Anakala and his 'ohana to restore taro terraces and pause for a refreshing brunch; help ready poi for tonight's Pa'ina (local feast); spend leisure time in Kaunakakai. Early evening, venture to Uncle Herb's ancient fishpond to enjoy a shoreside Pa'ina, followed by a homestyle Hawaiian music "jam" session.

DAY 3 - Explorers' Moloka'i

Located in the middle of the Humpback National Marine Sanctuary between Moloka'i, Lana'i and Maui, this maritime tropical wonderland offers front-row seats to the breeding grounds for humpback whales and other myriad marine wildlife. Early this morning we'll anchor in Hale 'o' Lono Harbor to explore Moloka'i as you like: hike the switchbacks of the Kalaupapa Trail or ride on a surefooted mule (optional); bike around the island; join a local guide for a hike in untouched Mo'omomi Preserve; kayak; and end your day under the stars onboard the Safari Explorer for a relaxed time to "talk story" with an engaging local guest.

DAY 4 - Lana'i: The Private Island

On Lana'i, steep rock faces line many protected coves. We'll cruise by white-sand beaches to Nanahoa where we will anchor close to the ancient volcanic plugs sitting both above and below the water surface. Choose snorkeling, kayaking, sailing, motor launch exploration and other water activities. This afternoon we will be underway again to Manele Bay for more activities: hiking, a leisurely nature walk, and for golfers, a chance to play either *The Challenge at Manele* or *The Experience at Koele* (optional).



DAY 5 - Molokini Marine Wildlife

It's time to be on deck for whale sightings in one of Hawaii's prime humpback locations. Later we'll go ashore on Maui and explore secluded beaches and bays. Hike on the Laparuse Trail (King's Highway) to view ancient Hawaiian ruins. Golfers can play a round of golf (optional). Later, we'll anchor off Molokini, an almost submerged crater off the coast of Maui. Here we'll have the rare opportunity to experience night snorkeling and scuba diving (optional) to view the reef and harmless sharks.

DAY 6 - Big Island Coastal Adventures

This morning we approach the Big Island's southern coast. En route we search for dolphins, whales and even the elusive whale shark. At the edge around Ka Lae (southernmost tip of the United States), we stop at Black Sands Beach. If conditions allow, we'll look for active lava flows into the ocean. We hug the coast northward, passing by the sacred Place of Refuge to Kealakekua Bay. A snorkeling excursion in the bay reveals a diversity of colorful corals, sea turtles, sponges, and tropical fishes.

DAY 7 - Big Island Historical Sights

We set sail this morning for the Kohala Coast. At Kailua-Kona there is an opportunity to join an historic walking tour of the town of Kailua and the gallery-rich village of Holualoa. For those so inclined, an (optional) heli-tour is available to view remote waterfalls and Kilauea's caldera. Early this evening we are underway to an offshore location where we'll have the opportunity to swim with Great Pacific Manta rays.

DAY 8 - Big Island - Disembark

We'll transfer you to the Kona Airport or to your hotel to begin your post cruise extension.



See reverse side for yacht deck plans and departure dates and rates

Anderson Travel
253-853-8687

Luxury in the Pursuit of Adventure

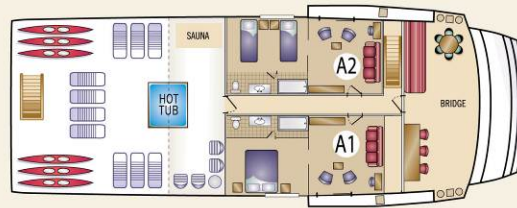
SAFARI EXPLORER



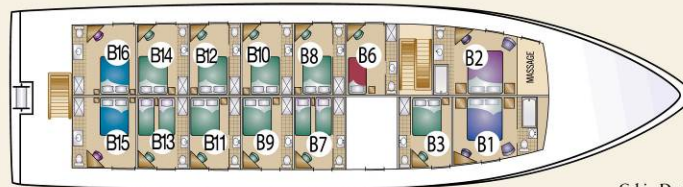
LENGTH	145'
BEAM	36'
DRAFT	8.5'
GUESTS	36 (up to 40 w/triples)
CRUISE SPEED	10 knots
CREW	16
BUILDER	Freeport Shipbuilding

AMENITIES & ACTIVITIES

- Sauna and complimentary massages *plus* on-deck hot tub for an “under the stars” experience
- Onboard exercise equipment such as elliptical trainer and exercise bike
- A large screen TV/DVD in the main salon & an exclusive wine library
- A full-beam swim-step for ease in boarding the 2-person sea kayaks and the high-speed skiffs
- Hair dryers, bathrobes, alarm clock, iPod docking station and TV/DVD players
- Heated tile floors in bathrooms
- Tempur-pedic® memory foam mattresses
- A DVD, book and wine library
- Included bar stocked with premium spirits, fine wines and micro-brews



Bridge Deck



Cabin Deck



Main Deck

***Please note:** Commodore Suites and Admiral Staterooms: A1, A2, C1 & C2 offer triple accommodations.

Master Staterooms: B3, B8, B10, B12 & B14 are fixed queen size beds - B7, B9, B11 & B13 are twin size beds that can be configured to a queen size bed.

COMMODORE SUITES A1, A2

Feature a separate sitting area, king or twin beds, private bath with Jacuzzi tub and shower, view window and a sliding glass door opening to a small balcony.

ADMIRAL STATEROOMS B1, C1, C2

Feature king or twin beds, a windowed door or view window, and private bath with Jacuzzi tub and shower.

CAPTAIN STATEROOMS B2

Feature king or twin beds, view window, windowed door and private bath with shower.

COMMANDER STATEROOMS B15, B16

Feature king or twin beds, view window, windowed door and private bath with shower.

MARINER STATEROOMS B3, B7, B8, B9, B10, B11, B12, B13, B14

Feature queen or twin beds, view window, windowed door and private bath with shower.

SINGLE STATEROOM B6

Features a twin bed, view window, windowed door and private bath with shower. Pullman berth available.

2011-2012 Departures & Prices 8 Days — 7 Nights • Maui to the Big Island (or reverse)

<i>Safari Explorer</i>	SINGLE	MASTER	COMMANDER	CAPTAIN	ADMIRAL	COMMODORE SUITE	FULL YACHT CHARTER	COMMODORE TRIPLE	ADMIRAL TRIPLE
2011									
November 6*, 14, 30	\$5,795	\$4,995	\$5,395	\$5,795	\$6,495	\$7,695	\$198,995	\$6,545	\$5,495
November 22*	\$6,595	\$5,695	\$6,095	\$6,595	\$7,395	\$8,595	\$224,995	\$7,295	\$6,295
December 19, 27*									
2012									
January 4, 12*	\$5,795	\$4,995	\$5,395	\$5,795	\$6,495	\$7,695	\$198,995	\$6,545	\$5,495
April 25									
May 3*									
January 20, 28*	\$6,595	\$5,695	\$6,095	\$6,595	\$7,395	\$8,595	\$224,995	\$7,295	\$6,295
February 5, 13*, 21, 29*									
March 8#, 16* 24#									
April 1*, 17*									

* Indicates reverse itinerary (Big Island to Maui). # Indicates “Kids in Nature” family departure. All rates are per person, double occupancy in US dollars. Any stateroom (except Single stateroom) may be sold as a single for 175% of double occupancy rate. Private charters are available on a request basis.